



Bathroom hardware ErgoSystem® A100, E300 and METRIC®

2



One system, two variants: the ErgoSystem® E300 and A100 ranges allow completely barrier-free solutions to be incorporated into any architectural scheme and into any setting. The ErgoSystem® boasts variants in two attractive materials, elegant design elements, a wealth of colour combinations and an incomparable product depth that leaves nothing to be desired.



38	ErgoSystem® E300
43	METRIC®
44	ErgoSystem® A100

Bathroom hardware

ErgoSystem® A100, E300 and METRIC®



Functional, ergonomic, visually appealing: ErgoSystem®

The multi-award-winning barrier-free ErgoSystem® E300 or A100 is a treat not only to the palm of the hand but also to the discerning eye. What's more, FSB also provides a range of attractive bathroom accessories with METRIC®.

ErgoSystem® E300

The ErgoSystem® E300 (E = stainless steel, 300 = 'high grade' / heavy duty) embodies peerless system depth, superior design and well-conceived functionality. Flexibility is guaranteed by this extensive system comprising more than 400 products made of satin matt or polished stainless steel of the highest quality. Stainless steel is extremely corrosion-resistant and also very easy to care for. An invisible passive layer also naturally forms on its surface, allowing it to easily withstand cleaning agents

and disinfectants. That's why it is the first choice especially for premium fixtures and fittings, such as those installed in optional service areas in hospitals, nursing homes and hotels – anywhere where high standards need to be met.

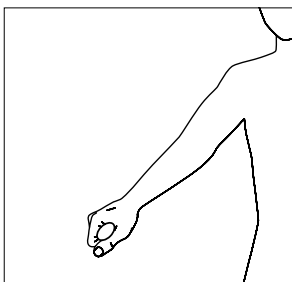
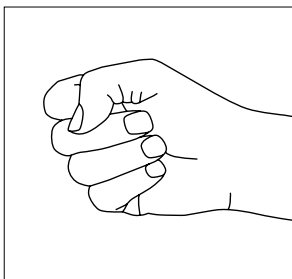
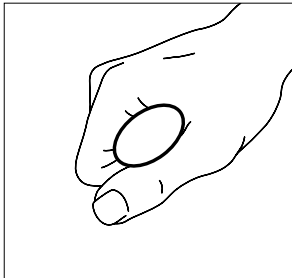
ErgoSystem® A100

The ErgoSystem® A100 (A = aluminium, 100 = budget-friendly/heavy duty) scores high in terms of pricing, handling and coordinated interiors. The variable colour combinations mean that the system can be individually adapted to create a specific ambiance – whether those combinations are tone-in-tone or chosen with specific attention to Light Reflectance Values. The powder-coated components made of premium aluminium also feature impressive corrosion resistance. Installation is

easy and precise thanks to an assembly shoe concept with built-in compensation for lateral play of ± 2 mm.

METRIC®

Form follows elegance. Bathrooms have long since ceased to be purely functional rooms. The emphasis has shifted far more towards feeling good and pampering all of the senses. Well-designed accessories have a key part to play in this. METRIC® bathroom accessories are a joy to behold and look right in any setting, with their satin matt or polished stainless steel finishes. At the heart of this collection is a design concept based on geometric shapes. As an alternative to conventional screw fixing, FSB also offers a high-adhesion bonding technique that leaves no residues if removed.



FSB ErgoSystem®: unparalleled comfort and dependable support

When you've been making tools as extensions of the human hand for as long as FSB has, you come to learn a few things. The insights we've gained over the years have been incorporated in the development of the ErgoSystem®. For example, hands naturally fold around an oval shape when gripping.

Both the ErgoSystem® E300 and A100 feature a diagonally aligned oval grip cross-section that is unique to the marketplace. Such a grip design consistently follows the laws of grip ergonomics and delivers unparalleled comfort and dependable support. There is a difference between taking hold of an object and enclosing it. Enclosure involves the whole surface of the hand and hence a far more distributed transmission of force. We all resort to it instinctively whenever we have to support our own body weight.

The ideal grip shape is oval

An oval cross-section conforms particularly well to the laws governing the anatomy of the hand. The hand encloses the elliptical cross-section snugly. The effort is distributed evenly among all finger joints and optimum use is made of all joints of the hand including the wrist. As a result, far less force needs to be exerted by the hand to prevent loss of grip than with a circular cross-section. The oval is therefore the ideal shape for the grip cross-section of handles and rails and offers the greatest possible support, especially if it is rotated 45° to tilt forward diagonally. This shape and orientation follow the natural movement of the arm and grip of the hand as a person reaches out to take hold of something. The arm comes out in a diagonal motion from the shoulder and the hand encloses around the object, forming a sturdy triangle that connects the hand, shoulder and the area the person is standing on. As a result the force is able to be transmitted from the body through the arm to the hand with optimum effect.

Benefits at a glance



The ideal grip shape is oval
The unique elliptical design of the grip cross-section allows it to be firmly gripped.



Custom production
Bespoke lengths and product variants at attractive prices



High durability
Suitable for constant daily use with no loss of function



Flexibility
Versatile solution for flexible, needs-based fit-outs with barrier-free, reversible components



Minimum exertion of force
Easy to handle thanks to ergonomic oval grip cross-sections, shower-head holders that can be operated with one hand and spring-assisted drop-down support rails



Made in Germany
FSB develops and manufactures its products exclusively in Brakel in eastern Westphalia



In-house tool manufacture
Speedy and flexible production



Award-winning
The Red Dot Design Award and ICONIC AWARD to name but two; selected products bear a CE marking, certified under DIN 18040

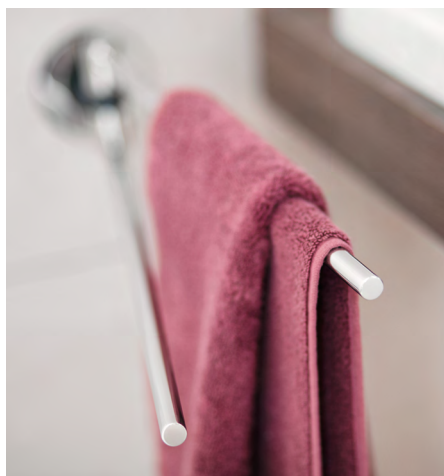


Bathroom hardware

ErgoSystem® E300

The ErgoSystem® E300 in stainless steel comprises over 400 products and is suitable for all application areas. This comprehensive range concentrates on grab rails, drop-down support rails and seat solutions that can be combined with the most diverse accessories.

Discover the ErgoSystem®:
www.fsb.de/ergosystem



Premium line in stainless steel

It is not without reason that ErgoSystem® E300 in stainless steel, a treat not only to the hand as it grips but also to the discerning eye, has established itself over the past ten years and more as the Number One choice amongst architects and clients who lay particular store by convenience and design.

ErgoSystem® E300 is helpfully at hand without having the aura of a clinic or rehab equipment. With its timeless good looks, it will suit any bathroom architecture perfectly, enhancing levels of comfort without looking out of place. The principle informing the ErgoSystem® derives

unequivocally from the ergonomics of grip. The diagonal alignment of its oval cross-section – a unique market design – affords the hand optimum gripping quality whilst reducing the force it exerts when taking hold of the hardware.

Flexibility is guaranteed by a completely barrier-free system comprising more than 400 products that can be combined and added to in line with the application in hand. ErgoSystem® E300 facilitates the flexible planning of exclusive fit-outs through a comprehensive range of grab rails, drop-down support rails and seat solutions that can be combined with the

most diverse of accessory items so as to add further functions as specifically required. The range of add-on products with matching function and system properties includes shower rails with showerhead holder, care-responsive products such as splash guards and safety belts, and classic sanitary accessories such as towel holders, storage trays and mirrors. Top-quality machining and the exclusive use of premium materials are part and parcel of the FSB tradition. Stainless steel with a satin matt sheen is the number one choice. Seat sections are in kind-to-the-skin PUR.



Flexibility

With A-Flex, FSB offers a well-conceived means of flexibly and demand-responsively fitting spaces out with barrier-free components from the ErgoSystem® E300 range. A-Flex can be particularly recommended for hoteliers or the operators of hospitals with private wards, who can use it to cater to the individual or acutely changing needs of guests and patients. The system yields benefits in the form of significantly lower costs for the initial fit-out, as the spaces concerned are merely fitted with an A-Flex support plate and use can be made of drop-down support rails and tip-up shower seats as required.

Anti-ligature variants of selected products from the ErgoSystem® E300 range are additionally available for use in special areas such as prisons, forensic units or psychiatric establishments.

FSB ErgoSystem® has also been accorded the quality kitemarks of the German Society for Gerontological Technology and the Rhineland Technical Inspection Agency. ErgoSystem® has – like all products by FSB – been certified in accordance with EN 15804, allowing it to fulfil even the most ambitious prerequisites for sustainable building.

Finishes

- ① FSB 6204, Satin Stainless Steel
- ② FSB 6205, Polished Stainless Steel

Bathroom hardware

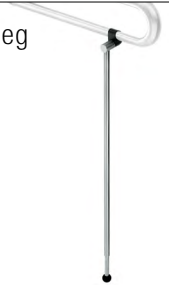
ErgoSystem® E300 Overview

Drop-down support rails

Wall-mounted/drop-down support rails

A-Flex drop-down support rails

Supporting leg



Backrest

Armrest

Push-button actuators

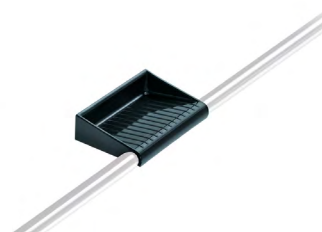


Grab rails and handrails

Handrail combinations

Storage trays

Grab rail



Angled rails

Wall-mounted support rails

Floor/wall-mounted support rail



Seats

Suspended seats



Tip-up shower seats



Shower and bath stool



Free-standing stool



Shower rails

Shower rails



Shower attachments



Shower curtain rails



Bathroom hardware

ErgoSystem® E300 Overview

Accessories

Utensils tray



Cup holder, soap holder



Soap dispenser



Tilting mirror



Wall mirror



Towel rails



Hooks



Hooks (coloured)



Toilet roll holders



Toilet brush set



Walking aid holder



Splash guard holders



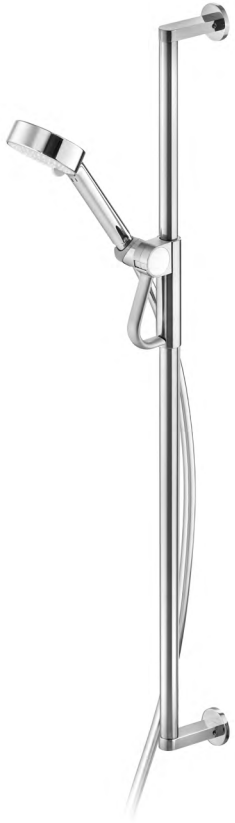
Doorstop



Bathroom hardware

METRIC® Overview

Shower rail



Utensils tray



Cup holder, soap holder



Soap dispenser



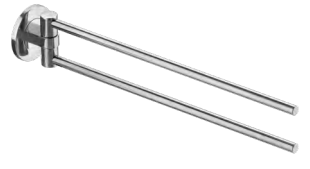
Bath towel rail



Bath towel rail



Hand towel rail



Wall hook, coat hook



Spare toilet roll holder



Spare toilet roll holder



Toilet roll holder



Oval toilet brush set



Round toilet brush set



Doorstop



Bathroom hardware

ErgoSystem® A100

The ErgoSystem® A100 in aluminium can be individually adapted to suit any interior and create a specific ambiance thanks to its variable colour combinations. Brackets angled from the wall open up the space behind the handrails, making them especially comfortable to grip.

Discover the ErgoSystem®:
www.fsb.de/ergosystem



Ergonomic, good-looking, attractively priced, in aluminium

Whereas ErgoSystem® E300 is often preferred for exclusive fit-outs of, for instance private wards or hotels, ErgoSystem® A100 likewise brings FSB quality to budget-sensitive ventures.

ErgoSystem® A100 is perfectly geared to virtually any application and location. Randomly configurable sets of handrails with bespoke profiles that can be cut to length on site make for simplified planning and assembly. The rails combine with our multiply award-winning shower-head holder for singlehanded operation to yield an ideal fitment level for shower areas. Shelf surfaces with and without retention bars are supplied in standard dimensions as well as in customised lengths. The drop-down support rail is particularly flexible owing

to its not being handed. Wall rails of variable length, a fixed safety rail, towel holders, wall hooks and toilet-roll holders round off the ErgoSystem® A100.

Variable colour constellations

The ErgoSystem® A100 can be custom-adapted to specific interiors and settings by dint of its variable colour constellations. The colours of brackets / structural parts and hand/grab rails can be freely combined, thus facilitating sufficient contrast to ensure optimum visibility and readability within a space, something that makes life safer and more convenient for elderly people with poor eyesight in particular (Light Reflectance Value). Safe gripping can optionally be aided by selecting hand-holds and brackets in different colours.

Conversely, those for whom the issue of contrast is less critical – be they young or old – can simply deploy the different colours as an interior-design style tool. ErgoSystem® A100 components can be imaginatively adapted to the colour, finish and sheen of tiling and solutions devised whereby products discreetly merge with their background. Though they can be taken for granted as part of a given spatial configuration, they nevertheless have a strong identity of their own, adding a bespoke touch to any interior.

The ErgoSystem® A100 cuts quite a dash in assembly terms too: simplified design engineering has given rise to fewer parts and these, in turn, are child's play to fit adopting the assembly-shoe concept. Visible parts and those of importance for



Unicolour coatings

the assembly process are decoupled from one another, which considerably simplifies fitting them and pre-empts assembly errors.

Grab rails, drop-down support rails and tip-up shower seats are engineered in such a way that they can be detached when not in use and their permanently mounted bearer plates concealed by means of a cover-plate. This allows products to be fitted as and when required.

- ① FSB 8220, Anemone White, Similar to RAL 9016
- ② FSB 8224, White Matt, Similar to RAL 9016
- ③ FSB 8803, Oyster Grey, Similar to RAL 7040
- ④ FSB 8809, Anthracite Grey Metallic, Similar to RAL 7016
- ⑤ FSB 8849, Black Matt, Similar to RAL 9005

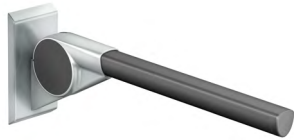
Combined coatings

- ⑥ FSB 8223: Brackets/holder FSB 8829, Aluminium Grey Metallic Handrail/rail FSB 8220, Anemone White
- ⑦ FSB 8810: Brackets/holder FSB 8220, Anemone White Handrail/rail FSB 8803, Oyster Grey
- ⑧ FSB 8811: Brackets/holder FSB 8829, Aluminium Grey Metallic Handrail/rail FSB 8809, Anthracite Grey Metallic

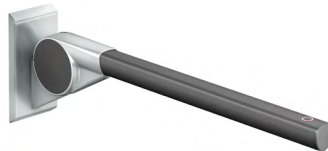
Bathroom hardware

ErgoSystem® A100 Overview

Drop-down support rails



Drop-down support rails



Drop-down support rail with function buttons

Supporting leg



Grab rails and handrails

Handrail combinations



Corner storage trays



Angled rails



Grab rails



Storage trays



Seats

Suspended seats



Tip-up shower seats



Backrest



Shower rails

Shower rails



Shower attachments



Shower curtain rails



Accessories

Utensils trays



Cup holder, soap holder



Soap dispenser



Wall mirror



Hand towel rails



Hooks



Toilet roll holders



Toilet brush set

