



On the cutting edge:  
**Drawer system InnoTech Atira**

Technik für Möbel

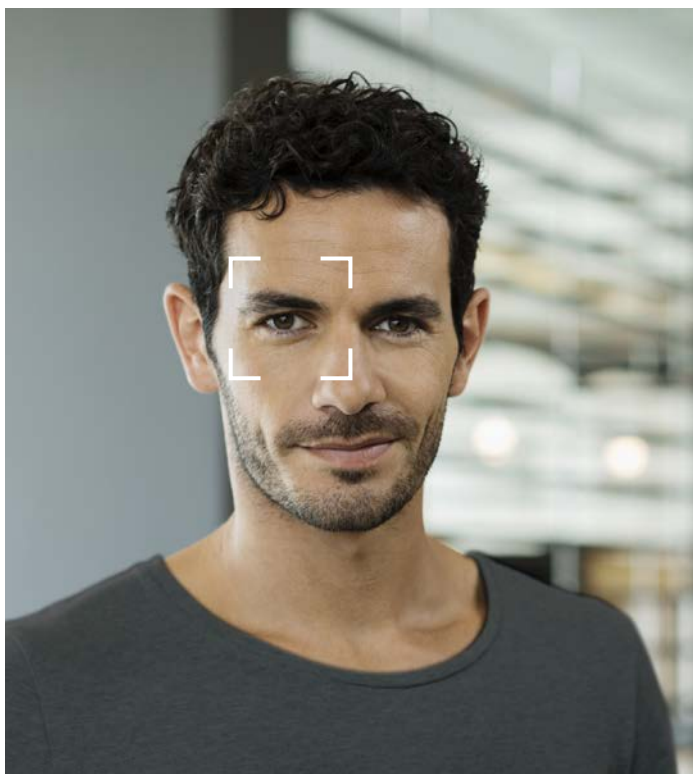
  
**Hettich**

On the cutting edge:  
Drawer system InnoTech Atira



Striking, versatile, flexible: the InnoTech Atira drawer system impresses the moment you set eyes on it. Sharp contours, a choice of colours and diverse side elements complemented by a wealth of interior organisation solutions produce plenty of creative potential. No other drawer system provides this level of individuality.

Effective differentiation is not just a matter of design. It's just as much a matter of function. The Quadro drawer runner provides the ideal basis for InnoTech Atira.



# Lean production meets broad furniture line up: InnoTech Atira platform concept

Standing apart from the competition while still keeping costs in check? Not a problem. Based on just one drawer side profile, InnoTech Atira gives you a wealth of options for individualised yet easily producible furniture line solutions. A large choice of side elements and rear panel widths, numerous colour options and a variety of runners – there's no limit to your creativity. And upgrading couldn't be easier either. The cost and work involved in production, stockkeeping and logistics are reduced to a minimum.



Pot-and-pan drawer with double railing, height 176 mm



Pot-and-pan drawer with railing, height 176 mm



Pot-and-pan drawer with railing, height 144 mm



Basis = drawer side profile, height 70 mm



Pot-and-pan drawer with TopSide glass, height 144 mm



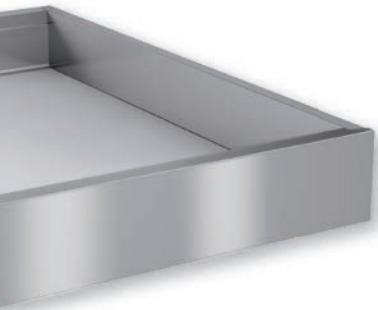
Pot-and-pan drawer with TopSide metal, height 144 mm



Pot-and-pan drawer with  
TopSide glass, height 176 mm



Pot-and-pan drawer with  
TopSide metal, height 176 mm



Pot-and-pan drawer with  
DesignSide, height 176 mm



Pot-and-pan drawer with  
DesignSide, height 144 mm



# Your expectations – our mission: InnoTech Atira



## Highlights at a glance

- Clean, squarely cut design
- Platform concept: differentiation with lean and efficient processes in production and stockkeeping
- Based on Quadro: one runner platform – two different drawer side profile contours
- All the benefits of the Quadro runner
- Silent System, Push to open
- Huge creative potential
- Consistent colour concept with matching components
- 3 heights, 7 lengths 260 – 620 mm
- Individualisation of internal front panels, TopSides below the railing and DesignSides
- Fast and easy installation
- Secure and sturdy connection between drawer and runner



[www.hettich.com](http://www.hettich.com)

15279\_IT-Atira\_0415\_HPH/en

Technik für Möbel

